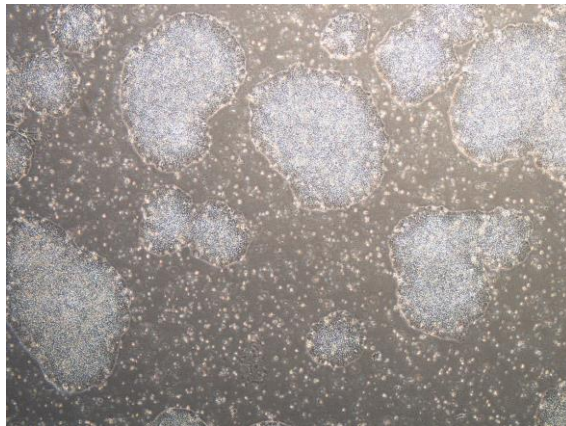


【 CiRA-j-1290 】 Morphology of iPSC colonies

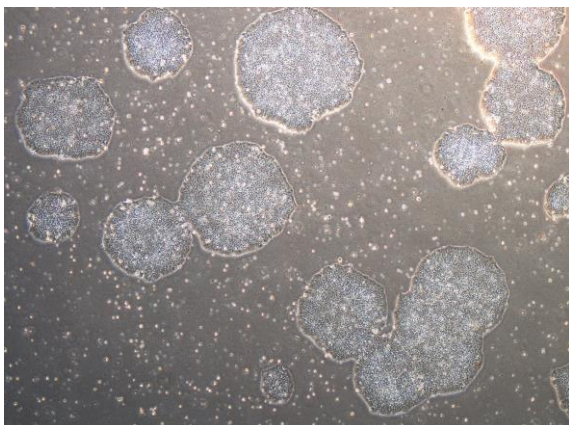
CiRA-j-1290-A: passage-2



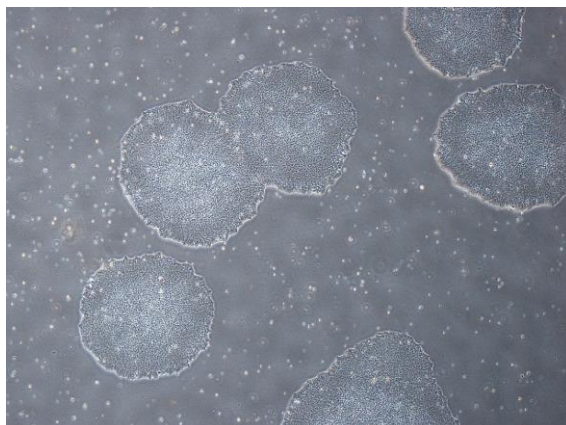
CiRA-j-1290-B: passage-2



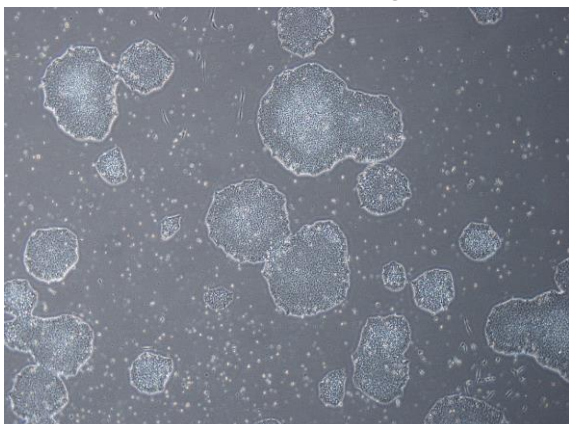
CiRA-j-1290-C: passage-2



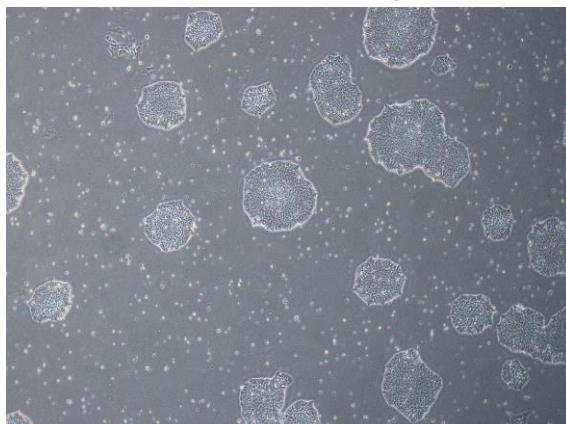
CiRA-j-1290-D: passage-2



CiRA-j-1290-E: passage-2



CiRA-j-1290-F: passage-2



(All images were captured at 4x magnification)